

# let's get fundraising

to help make a short life a full life



tŷ hafan



**Fundraising in  
schools and nurseries**

# fundraising for tŷ hafan in schools and nurseries

Whatever you choose to do, we hope you find this pack useful and full of inspiration. We'd love to hear your plans, so if you have any questions please get in touch.

## Contents

	Page
1. How your school and Tŷ Hafan can work together	3
2. Working together as partners	4
3. Make a real impact on the families who need us	5
4. Activities your school can consider	7
5. What can Tŷ Hafan offer you to support your fantastic fundraising?	8
6. How this support fits into your curriculum or syllabus	9
7. How can working with Tŷ Hafan help your students to succeed?	10
8. Delivering the Skills Challenge with Tŷ Hafan	11
9. We can also support you with your Duke of Edinburgh Award	13
10. Add value to your fundraising and maximise every opportunity	14
11. Other ways pupils and teachers can fundraise	15
12. A word from one of our young fundraising heroes, Emily	16
13. Next steps	20

**Get in touch today.**

supportercare@tyhafan.org / 029 2053 2255

Further contact details on page 21.



# 1.

## How your school and Tŷ Hafan can work together

Welcome to the Tŷ Hafan school fundraising pack. We have developed this resource to offer schools in Wales support with fundraising, Enterprise Week, the Duke of Edinburgh Award scheme and your Welsh Bacallaureate programme.

If you're not aware of Tŷ Hafan, we are a leading paediatric palliative care charity and offer care to children with life-shortening conditions and support for their families throughout south and west Wales. If you think this means we simply provide a place where children can come to die, you couldn't be further from the truth.

We help the families who need us to create happy memories and make the most of the time they have together. We allow parents and carers the opportunity to relax and recharge their batteries, and we make sure the needs of brothers and sisters are never forgotten.



### What do we mean by life-shortening?

We use the term life-shortening when a child's condition(s) means that they aren't expected to live beyond 18 years of age. We've supported over 1,000 children since we opened in 1999 and will be there for however long families need us – at home, in hospital, at school and in our hospice.

We're a family's safe haven when their child is close to the end of their life, providing expert comfort and support in their darkest hours and beyond.



## 2.

# Working together as partners

**How can schools support Tŷ Hafan and make a real difference to young people in Wales?**

There are many ways pupils and staff can get involved and raise vital funds for the families who need us. We currently support over 270 children of differing ages, both at the hospice and in every community in Wales, with less than 10% funding from the Welsh Government. The remaining amount is raised through fundraising, retail, events, grants and trusts, and our hospice lottery. This allows the hospice to keep its doors open to families who describe us as a 'lifeline'. You may even have a child in your school or community who has connections to Tŷ Hafan.



### Pontllanfraith Primary

We've been very fortunate to receive support from many schools in Wales, such as Pontllanfraith Primary near Blackwood, where pupils took part in a very special fundraiser in memory of one of their classmates, Thomas Meacham, who was cared for by Tŷ Hafan before he died.

Year 6 pupils wanted to do something to remember their friend before they went on to secondary school, so they committed to walking or running a mile every day during the summer term. They got the rest of the school involved too! They kept going until they'd walked the equivalent of the coastline of Britain – some 8,000 miles - and collected £1,240 in sponsorship. As well as fundraising for Tŷ Hafan, the pupils raised money for a new playground shelter in Thomas' memory.

Their teacher, Emily Wills, said the class ambassadors put together a geography project on their journey and explained why it was so close to their hearts. "They thoroughly enjoyed all the work to complete this project and for such a great cause."

Thomas' father, James, said the family were "very proud" of the pupils. "Thomas left a strong legacy with them," he said. "It's a lovely gesture in his memory."

You can see the videos that Pontllanfraith Primary created where they talk about their fundraising.





*"It's all about the moments, the smiles and the little cuddles"*

**3.**

## **Make a real impact on the families who need us**

Take a look at the next page and find some examples of how your donation can make a real impact to the children and their families who rely on Tŷ Hafan as their lifeline.

Many of the children supported by Tŷ Hafan fall into the same age group as your pupils, which could help them form a natural affinity with the charity. And by providing examples of what the money they raise is used for and how it goes towards helping a Tŷ Hafan family, children can really see the difference they can make.

We will support their creativity, innovation and financial knowledge to help make them the fundraisers of the future.

Thank you for making a **short life a full life**

**£50**

could pay for an **hour of music therapy** giving children the chance to make lasting memories together.

**£185**

could pay for a **specially trained nurse** to care for a child at the hospice throughout the night, allowing mum and dad to get a good night's sleep.

**£250**

could pay for **five hours of music therapy** for a child in their own home.



**£500**

could pay for three families to receive a **whole day of support** in their own homes.

**£600**

could pay for **20 hours of outreach play therapy** to encourage families to interact and play together.

**£1,250**

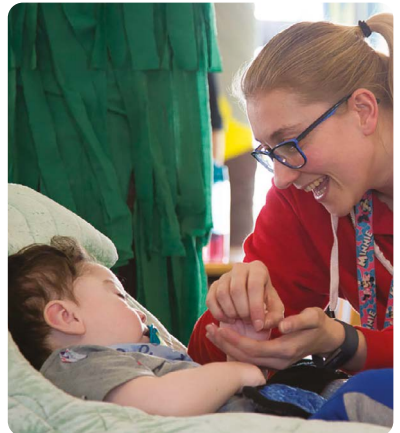
could pay for **25 hours of music therapy** for a child in their own home, giving them their first chance to communicate.

**£3,000**

gives a family a whole **weekend of short break care** at our hospice.

**£5,000**

gives a family **five days short break care** at the hospice, helping mum and dad to get some much needed rest.



# 4.

## Activities your school can consider

1. Choose Tŷ Hafan as your charity of the year.
2. Make Tŷ Hafan your charity choice for:
  - a. Enterprise Week
  - b. The Welsh Bacculaureate programme
  - c. Duke of Edinburgh Award
3. Have a look at all ways your school can support us on our website and sign up to an event.

### Here are a few more ways that you and your school could take on to help support Tŷ Hafan:

1. Sign up to **Walk a Day in Their Shoes**. You can get together with your friends, your class, your year group, or your whole school and take a walk in the shoes of one of our Care team. You could make this part of a nature walk or one of your PE lessons.
2. Organise a **Go Green Day** – dress up, recycle, or go on a nature trail, and make a donation to Tŷ Hafan.
3. Host a **cake/tabletop sale** donating your proceeds to Tŷ Hafan.
4. **Recycling** – make a donation of clothes or unwanted items to one of our charity shops.
5. Physical and mental wellbeing can be supported by **hosting a sports day** or **family fun day**.
6. Ask your parents, family or people in your community to **support Tŷ Hafan at work or in their community groups**.
7. Organise an arts and crafts activity through **Handcrafted by Tŷ Hafan**, or host your own art exhibition and sell your products donating the proceeds to Tŷ Hafan.
8. Set yourselves a **Dragon's Den challenge**.
9. Set up your own short or long term **school fundraising group** – possibly in memory of someone you have lost.
10. Create a **competition** between classes, year groups or Welsh Bacc groups to raise the most money from a small budget of £50 and donate the proceeds to Tŷ Hafan.

We appreciate that schools and nurseries have similar budgetary challenges, and we welcome any opportunity to collaborate on any fundraising opportunities with you and are happy to split your total between Tŷ Hafan and your school. Whatever your contribution it will make a real difference to the children and families who need our support.



# 5.

## What can Tŷ Hafan offer you to support your fantastic fundraising?

1. An informative **Fundraising Pack** filled with ideas and useful information.
2. **Videos** you can play in your assembly.
3. **Templates** to support a project or business plan.
4. Branded **merchandise, key messages, resources** and **toolkits**.
5. The possibility of **social media** and **press coverage**.
6. A visit from your **local fundraiser** to talk about Tŷ Hafan.
7. **Price points** for services that you would like to fundraise against e.g. Pay for a Day = £14,250 and be awarded with a leaf on our Gift Tree as a legacy for your school.
8. Certificate of thanks and **thank you** product.
9. **Connections** to local businesses, groups and clubs in your area.
10. The opportunity to share your story in our **Family Friday Blog, our fundraising newsletter** or appear on our **website** to showcase your support and encourage other schools to duplicate your success.





# 6.

## How this support fits into your curriculum or syllabus

Tŷ Hafan understands the pressure schools are under to deliver their key stage curricula and knows how challenging it is to fit it all in. However, this pack has been designed specifically to support you and make sure that you benefit as much from this partnership as we do. We have worked with schools in many different ways over the years, allowing us to engage with local communities and to connect with local stories. And we make sure to offer bilingual resources to schools too.

Our team has loads of experience supporting schools and nurseries and would love to meet you to discuss ways that you can fundraise, as well as how you can deliver your syllabus through these activities.

How this fits into your curriculum (Elements of the areas of learning)		Ambitious, capable learners	Ethical informed citizens	Enterprising creative contributors	Healthy, confident individuals
1	<b>Languages, literacy and communication</b> with team work in the activity (e.g. prepare, promote, sell)	✓	✓	✓	✓
2	<b>Numeracy</b> with money management (balancing expenses and income)	✓	✓	✓	✓
3	<b>Science and technology</b> in recycling and being a responsible citizen	✓	✓	✓	✓
4	<b>Science and technology</b> in researching and implementing ideas	✓	✓	✓	✓
5	<b>Languages, literacy and communication</b> with innovative thinking, planning and executing their ideas in a team	✓	✓	✓	✓
6	<b>Languages, literacy and communication</b> with posters and communication	✓	✓	✓	✓
7	<b>Expressive arts</b> with design of posters	✓	✓	✓	✓
8	<b>Work ethic</b> in seeing fruition of their hard work	✓	✓	✓	✓
9	<b>Pride and recognition</b> in a job well done	✓	✓	✓	✓
10	<b>Health and well-being</b> with learning from mistakes	✓	✓	✓	✓
11	<b>Inclusion</b> with whole class/school activity	✓	✓	✓	✓
12	<b>Confidence and motivation</b> to succeed	✓	✓	✓	✓

Life Skills

Wellness

Thank you for making a **short life a full life**

## 7.

# How can working with Tŷ Hafan help your students to succeed?

Tŷ Hafan is a well-known national charity that can help your students in their continued education and improve their chances of employability. We can design challenges to help fulfil their **Citizenship and Community modules**, as well as **enterprise opportunities** through fundraising and volunteering. There are also opportunities for collaborating with local businesses and giving back through community engagement.

We can also help students in the **Welsh Baccalaureate (Welsh Bacc) programme**. The combinations of qualifications that the Welsh Bacc award is based on helps learners get the most from their experiences and skills they have. Learners get real-life experience outside school and learn how to apply skills in practical situations.

The Welsh Bacc can be achieved at three levels:

1. Foundation (Level 1)
2. National (Level 2)
3. Advanced (Level 3)

We can help learners successfully complete the Skills Challenge Certificate and reach the required level needed in supporting qualifications.



## 8.

# Delivering the Skills Challenge with Tŷ Hafan

**The Skills Challenge Certificate (SCC)** is a standalone graded qualification, valued as a GCSE or A-Level equivalent or can be taken alongside GCSEs or A-Levels. It focuses on developing a range of essential employable skills and gives learners the opportunity to study topics and issues of their choice, relevant to their future study and career plans.

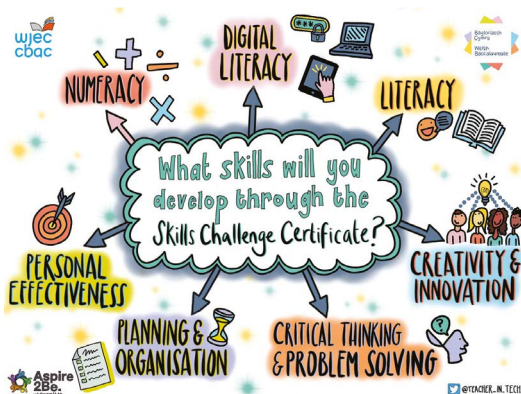
It consists of four components that can be delivered alongside Tŷ Hafan:

- Individual project
- Enterprise and Employability Challenge
- Global Citizenship Challenge
- Community Challenge

We can come to your school, deliver a presentation about Tŷ Hafan and the third sector, offer volunteering opportunities and help participants to decide on project ideas. We can develop their confidence and support them when developing a concept, work up a plan and help them deliver it with measured outcomes. We can also provide resources, local business contacts and access to families.

Many universities treat the **Advanced SCC** as equivalent to an A-level when making offers, so the Welsh Bacc is important for students when fulfilling their educational ambitions and a strong charity is essential to helping them deliver.

So if you are interested in supporting your local children's hospice, please contact the fundraising team to receive your fundraising pack, resources, help and support. You can find their contact details on **page 21**.







# 9.

## We can also support you with your Duke of Edinburgh Award

The Duke of Edinburgh Award (DofE) really is a life-changing experience. It's a fun time with friends, an opportunity to discover new interests and talents, a tool to develop essential skills for life and work and is a recognised mark of achievement respected by employers.

By volunteering in our shops, at our events or even in the office or hospice grounds, DofE participants will gain essential skills such as resilience, problem-solving, team-work, communication and drive, as well as enhancing their CVs or university and job applications.

Any young person between 14 – 24-years-old can do their DofE – regardless of ability, gender, background or location. Activities for each DofE section take a minimum of one hour a week over a set period of time, so they can fit in around academic study, hobbies and social lives. We would offer support, advice and opportunities relevant to the award scheme: volunteering, physical activity and work and life skills.

We provide students with resources and a member of our team to guide you through volunteer opportunities at Tŷ Hafan or in the community. Students will learn what it's like to work in the third sector as a chosen career path and should be introduced to the businesses we work with. Lastly, working with Tŷ Hafan for your DofE, you will be giving back to the community and making a real difference to children with life-shortening conditions and their families in Wales.



Thank you for making a **short life a full life**

# 10.

## Add value to your fundraising and maximise every opportunity

- 1. Match giving** – partner with a bank, building society or local business who can offer match giving funds, allowing you to double your fundraising total. If you would like more information, please ring your local community fundraiser and they can support you.
- 2. Sponsorship** – if you decide to sign up or participate in an event/challenge, there are also opportunities with local businesses for sponsorship to cover your school's costs.
- 3. JustGiving** – open a JustGiving account online to create a simpler way of giving. Consider fundraising in a group and create a team JustGiving page, where you can all share the link on social media, intranet, website, student's families and the community. This is a much easier way to collect donations and they will automatically be received by Tŷ Hafan without you having to do anything extra.
- 4. Sponsor Form** – if you would like to receive a sponsor form, please contact either your local community fundraiser or a member of supporter care, and they can send you a fundraising pack and sponsorship form either electronically or through the post.



"To see her smile is the most precious thing and she smiles all the time when she's at Tŷ Hafan"



# 11.

## Other ways pupils and teachers can fundraise

There are so many ways that pupils can support Tŷ Hafan outside of the school syllabus. Here are a few additional ways to raise vital funds for children with life-shortening conditions and their families in Wales:

1. Choose us as your after school club's charity of choice, for example, a drama club could put on a show and proceeds can be donated to Tŷ Hafan, or the funds can be split between the school and our charity.
2. Consider fundraising in your Guides, Brownies, Scouts and Beavers groups.
3. If you or your students are members of local clubs, for example, martial arts, swimming, rugby etc, ask members to choose Tŷ Hafan to donate to. Fundraise with an event, a bucket collection, an introduction to a local business, or a competition against other groups like yours in the wider community.
4. For teachers, we would always encourage your faculty to think about fundraising opportunities. You could sign up to do a run, walk, cycle event, or create your own activity that we can support you with. Alternatively, introduce us to key local contacts you have in your networks, like slimming clubs, rotary or local theatre. You could even volunteer for us, the team are here to help and support you.



# 12.

## A word from one of our young fundraising heroes, Emily

12 year-old Emily is one of our fundraising heroes in every sense of the word.

Emily's nine-year-old brother Peter and their family had been regular visitors to the hospice since Peter was one. Peter sadly died in 2019 but with the support of their parents, Liz and Richard, Emily decided that she would keep her brother's memory alive by throwing herself into fundraising for Tŷ Hafan and saying thank you to everyone who supported their family.

She set her sights high by taking part in Walk a Day in their Shoes. The event allows participants to dedicate their walk to a specific member of the care team, with each one representing a different distance, but Emily couldn't choose just one person, so she decided to walk for all four which totalled 31 miles. On the last walk of her challenge, Emily was joined by Sophie, our transition nurse, who Peter had a special connection with during his time at the hospice.

Dad Richard took every step with Emily as she smashed her £250 target, raising over £1,000. She even appeared in the national press. It would have been Peter's 11<sup>th</sup> birthday during the month she took the challenge, so it turned out to be a celebration of his life and gave the family a positive focus during an incredibly difficult time.

Richard said: "We've been part of the Tŷ Hafan family since Peter was one and even now, 18 months after Peter passed, they are still providing us with support. We cannot thank them enough for everything they have done for us all over the past ten years."







"I am a  
who w  
loved a  
the san  
othe

What  
Not to Buy

help us be  
who need us.  
visit:

Emily and Sophie with  
their collection boxes



Thank you for making a short life a full life

# Fundraising opportunities for nursery and primary children

We've been lucky enough to have a number of nurseries and Key Stage 1 classes take on fun and inclusive activities to fundraise for us. There are lots of ways to have fun and make a real impact to the lives of Tŷ Hafan families while fulfilling your syllabus. And there's nothing more amazing than children raising funds for children.

**To support with your fundraising, we are proud to be in a partnership with SuperTed, the world's most famous superhero bear, created right here in Wales by Welsh BAFTA award-winning producer Michael Young.**

SuperTed is here to sprinkle cosmic dust on your fundraising to help make it a super success. Many of your parents and grandparents will know SuperTed well; why don't you ask them about the magical memories they have, they may even know his secret magic word!





We have a few ideas to help kick-start your **SUPER** fundraising:

**SuperTed colouring-in competition** – Use our SuperTed colouring sheet and hold a colouring-in competition.

**SuperTed themed fundraising day** – Ask pupils to dress up as SuperTed or their favourite superhero for the day and make a donation.

**SuperTed themed cake sale** – Everybody loves a cake sale! Design a SuperTed poster and sell your SuperTed cakes for charity!

**Go Green for Tŷ Hafan** – Wear green socks or t-shirt, design a green superhero cape for SuperTed or recycle items through our shops.

**SuperTed Picnic** – Organise an indoor or outdoor class picnic get together... it could even be SuperTed themed! Parents could bake a cake and children could donate £2 to attend. Make it a teddy bears' picnic for younger children, and they can bring their own 'super' Ted!

We 'd love to hear all about your fundraising, please let us know by calling **029 2053 2255** and we can support you with anything you may need.



# 13.

## Next steps

Once you have chosen to support Tŷ Hafan, your next step is to contact our team either through Supporter Care based in our head office or through your local Community Fundraiser to discuss your plans. A member of our team can then organise a call or visit your school and provide you with resources, a plan template and branded items to get you started. We have so many more inspirational stories like Emily and Peter's happening in your community and we look forward to working with you.



*"My hand print will always be there on the wall so the younger generation can see that I was here and I had fun!"*



If you would like to work with Tŷ Hafan or are interested in finding out more, you can either contact our Supporter Care team on **029 2053 2255** or you can contact your local fundraiser.

**Supporter Care team** – resources, online, and practical support:



**James Davies-Hale**  
Supporter Care Manager  
e: james.dhale@tyhafan.org  
t: 029 2053 2284



**Lucy Kettlely**  
Fundraising Coordinator  
e: lucy.kettlely@tyhafan.org  
t: 029 2053 2287



**Laura Grindey**  
Fundraising Coordinator  
e: laura.grindey@tyhafan.org  
t: 029 2053 2257

**Local Fundraising team representative** – talks, presentations, workshops and fundraising plans:



**Shelley Kirkham**  
Senior Regional Fundraiser  
e: shelley.kirkham@tyhafan.org  
m: 07917 436 032

**Ceredigion, Carmarthenshire,  
Pembrokeshire, Swansea,  
Neath and Port Talbot**



**Helen Morgan**  
Senior Regional Fundraiser  
e: helen.morgan@tyhafan.org  
m: 07917 436 025

**Monmouthshire, Merthyr Tydfil, RCT,  
Caerphilly, Newport, Torfaen, Blaenau  
Gwent and Powys**



**Sorrel Mayo**  
Senior Regional Fundraiser  
e: sorrel.mayo@tyhafan.org  
m: 07976 164 172

**Cardiff, The Vale of  
Glamorgan and Bridgend**

Thank you for making a **short life a full life**



**Tŷ Hafan, Hayes Road, Sully CF64 5XX**

**029 2053 2202 | [www.tyhafan.org](http://www.tyhafan.org)**



Registered with  
**FUNDRAISING  
REGULATOR**